

4SITE Education

Spring Term 2012



See inside for news, educational sessions, booking details, exhibitions and events.

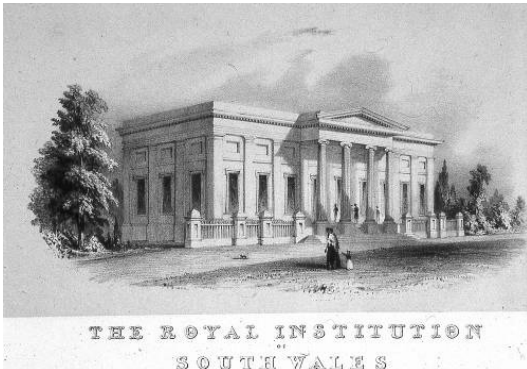


Contents



Swansea Museum.....	Page 3
Plantasia.....	Page 11
Glynn Vivian Art Gallery.....	Page 13
Dylan Thomas Centre.....	Page 14
West Glamorgan Archives.....	Page 15
Central Library.....	Page 16
Oystermouth Castle.....	Page 19
Swansea Community Boat Trust.....	Page 20
4-Site Publications.....	Page 21
Fact Sheets.....	Page 24
Resources.....	Page 25
Contact Us.....	Page 26
School Registration Form.....	Page 27

Swansea Museum - Foundation Phase / Key Stage 1



Topic: Mrs. Mahoney

Mrs Mahoney was the wife of the museum caretaker in the 1850s. He was sacked for embezzling money, and Mrs. Mahoney will narrate her sad story in costume and character, showing the children the trunk of things she is taking with her which show the difference between her way of life and theirs.

Suggested age group: Yr 2 only, unless it is a mixed class

Duration: 1 hour



Topic: Electricity and before

A session that looks at homes and daily life, and the changes over the last 150 years.

An active, taught session, using a lot of objects from past and present, studying the differences.

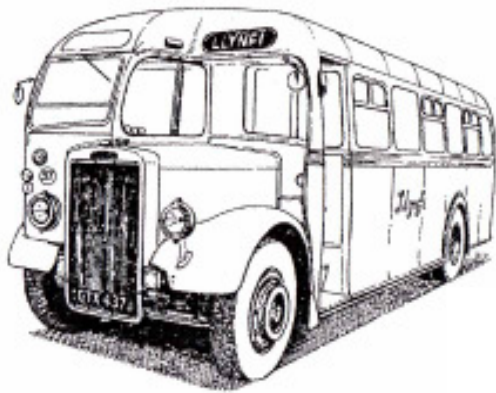
Pupils will have the opportunity to study objects such as toasting forks, 'slug' irons and wash boards.

The children may follow-up by visiting the 'Welsh Kitchen', on the first floor of the museum.

Suggested age group: Rec - Yr 2

Duration: 1 hour

Swansea Museum - Foundation Phase / Key Stage 1



Topic: Transport Tours

A chance for schools to get a “behind the scenes” visit to the Swansea Museums Service Store, which is a very big warehouse near the Park & Ride car park at Landore.

The children will be given a tour of the vehicles looking at changes and differences between them. On display we have an Allis Chalmers tractor, motorbikes, the gambo farm cart, the Vulcan and AEC lorries, the Sinclair C5, the horse drawn fire engine, the traction engine, the Llynfi bus, the Swansea Harbour inspection coach, etc. This will take about an hour and there can be another half hour for drawing if you wish.

Please note: the building is a store, not a museum, so the children will be kept to the area where the vehicles are, and there will be no lunch space.

Suggested age group: Rec – Yr 2

Duration: 1 hour

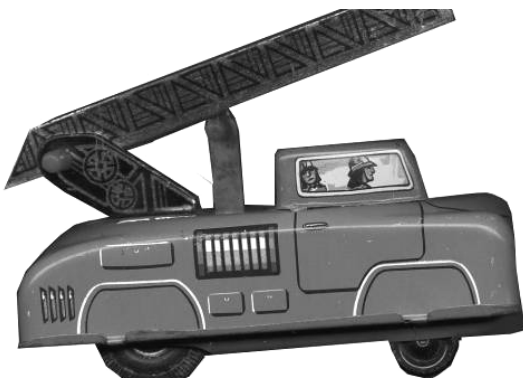
Topic: Toys

This is a taught hour session with dolls, clockwork toys, colourful tin-plate toys, money boxes, wooden toys, spinning tops and outdoor games. Themes such as materials, power and decoration are explored.

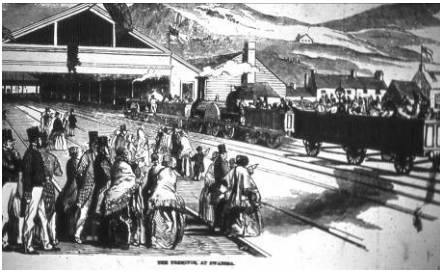
If you would like an opportunity for drawing afterward just let us know.

Suggested age group: Rec – Yr 2

Duration: 1 hour



Swansea Museum - Key Stage 2



Topic: Victorians

The Museum's Victorian displays are fully available. Therefore, in a general Victorian session, there will always be:

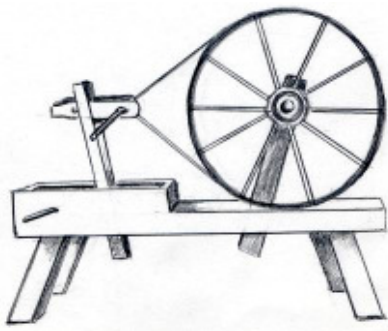
- A range of objects to handle
- A slide show talk tying together various aspects of Victorian times
- Work in the Cabinet of Curiosities

Suggested age group: Yr 4 - 6

Duration: Full-day

Optional Extras:

- A Wool Working session with Denise Morgan **
- A Shanty singing session with Dave Robinson **
- A Guided Tour of the pottery gallery (new pack available)
- A Guided Walk around nearby Victorian buildings



NOTES: **We can't do wool working and shanties on the same day, and these sessions need to be booked in advance as a tutor has to be brought in.

Topic: Lower Swansea Valley

Pupils often know the Enterprise Park B&Q, Morrisons, the Liberty Stadium, and the Marina. In exactly this area were the industries which grew up from 1700s and transformed society during the 19th century.

What happened in Wales was just as important as the textile inventions of Northern England. Copper and tinsplate in this area were as important as Merthyr iron and Rhondda coal.

There are still sites to visit with evidence of this past industry and resources to compliment such fieldwork. As the story unfolds, change follows change, and their causes and consequences can be seen at quite a simple level.

A visit involves a slide talk in the museum. A few objects will also be examined, all as an introduction to a visit to the White Rock Works site.

Suggested age group: Yr 5 and older

Duration: approx 2 hours (inc. site visit)





Topic: Early Peoples

This is a half-day session where children will have the opportunity to examine at locally found objects from the Stone Age to the Bronze Age.

There will be a chance to handle some of the objects along with a slide show presentation to put the objects into context and examine what life was like for some of the Early People living in Britain.

Suggested year group: Yr 3 / 4

Duration: Half-day

Topic: The Romans... and some Celts

A full day with many activities including the chance to try on costumes, replica Roman & Celtic shields as well as armour.

Visiting groups can meet a Roman character and find out what their life was like in Romano-Celtic Britain.

The children will have a chance to work out where some Roman objects have been found and to get a closer look at them in the Archaeology Gallery.

At the end of the day there will be a slide show talk which will bring together elements and themes of the day.

Suggested year group: Yr 3 / 4 / 5

Duration: Full-day (10am - 2.30pm)

Topic: Ancient Egypt

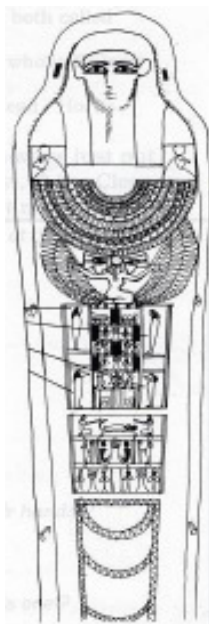
Swansea Museum houses a 2,200 year old Mummy which is on display. We also have many pieces of Egyptian pottery, glass, an ancient vanity mirror and even a mummified duck!

Combine your visit with a trip to the Egypt Centre in Swansea University for an excellent and full day out.

There is Gallery work and a slideshow. If you are planning a visit to the Egypt Centre we may have space for your group to have lunch. Please let us know if you require this when booking.

Suggested year group: Yr 3 / 4

Duration: Half-day



Swansea Museum - Key Stage 2



Topic: Swansea at War

Working with lots of artefacts from World War Two, war time paintings of the town centre by Will Evans, evacuees' suitcases to investigate, posters and photographs, a walk around the town (if wanted).

There is a slide talk covering many wartime themes, investigating how Swansea came to be bombed and the effects the attacks had on the old town centre and its people.

I can also arrange for your group to meet someone who lived through Swansea in the war years. If you would like this option just let me know at time of booking.

Suggested age group: Year 5 - 6
Duration: Full-day (10am - 2.00pm)



The Mumbles Railway

The tramshed has a street tram and a Mumbles train cab (both electric) and a replica 1807 horsedrawn tram, together with displays on the Mumbles train (with video), Swansea trams and the Constitution Hill tramway of 1898. For a transport theme, this shows, for example the change from horses to steam and then electricity, and finally from rail to road. A slide show talk and worksheets are possible - please contact museum for details.

Suggested age group: Yr 3 and older
Duration: Half-day



Topic: The Maritime Quarter

The Maritime Quarter changed from a windswept stretch of dunes to Swansea's posh quarter from the 1780s, to a busy dockland vicinity from 1859, to a derelict waste after 1970. Today it is an area of housing and leisure use. Schools study this an example of change, partly history, but also a fascinating way into land use in geography. A slide-talk and a range of worksheets (buildings, sculpture & carvings, land use, maritime aspects) available. There are also a range of Swansea landscape paintings on display. A profitable field visit studying local changes during the 19th Century.

Suggested age group: Yr 3 and older
Duration: Full-day

Swansea Museum - Key Stage 2 and 3



Ninety Degrees South - Edgar Evans, Scott and the Journey to the Pole

Ninety Degrees South marks the 100th Anniversary of Captain Robert Falcon Scott's (1868-1912) ill-fated journey to the South Pole.

It is now a hundred years since the members of Scott's historic expedition perished on the Antarctic ice-cap, marching back from their fateful visit to the South Pole. Their story has become one of the twentieth century's most enduring legends and whilst the names of Scott, Wilson, Oates and Bowers, have been celebrated across the nation, the name of Petty Officer Edgar Evans - the first of the five to die and a Swansea man - is less well known.

Cold Recall: Reflections of a Polar Explorer

Cold Recall: Reflections of a Polar Explorer, is a photo exhibit and a celebration of the 100th anniversary of Roald Amundsen's journey to become the 1st explorer to reach the South Pole. The exhibition features images from the lantern slides used by Amundsen in his talks and public lectures and will illustrate the challenges of arctic exploration in the early 20th Century. It provides a unique look at the daily lives of polar explorers. The exhibit is on loan from Norway's Fram Museum.

Both exhibitions open early in January 2012, if you would like to visit just let me know. There will be a week of special school sessions with activities and a presentation on the adventure and our local hero, Edgar Evans. We will also look at what's happening in the Polar Regions today, environmental issues and the impact of climate change.

Tuesday 21st– Friday 24th February.
Suggested age group: Year 4 - 6 & KS3
Duration: Full-day (10am - 2.00pm)



Swansea Museum - Key Stage 2 and 3



Topic: Alice Francis



Alice Francis was a real person, living in Victorian Swansea, and recorded on the 1851 census. She would have lived through many of the changes in 19th Century Swansea.

She lived in Morris Lane, nowadays renamed Kings Lane, and running from opposite a pub called the Kings Arms in High Street, Swansea down to Parc Tawe.

We have pretended she is the woman shown in paintings we have in the museum by William Butler, dated 1850-1, and showing Morris Lane and nearby Castle Lane.

There are resources including a short DVD for use before and after the visit.

The day in the museum

Involves two inputs from Val (Chance Encounters Theatre), one as Alice in costume and character and one discussing with the children how she researched the part.

The pupils explore sources – objects, paintings, photographs, in the galleries, out of cases, and through a slide talk.

Your group will spend part of the day investigating the interactive 1851 display at the National Waterfront museum.

Suggested age group: Yr 5 - 6

Duration: Full-day



To book any of the above Swansea Museum sessions please use the booking form on page 11.

For further information contact **Barry Hughes** on **01792 477180**.

Alternatively you may fax **01792 652585** or email Barry.Hughes@swansea.gov.uk

Swansea Museum Booking Form



Please photocopy this booking form for **Swansea Museum only**. Use one form per booking.

Please note: To book a visit to any of the other 4site venues please telephone them directly (contact details available at the end of this document)

Topic/session required:

School:

Contact name:

Email:

Age/Year group:

Number of children/students:

Any guidance on dates:

Any special requirements:

Please send completed booking form to:

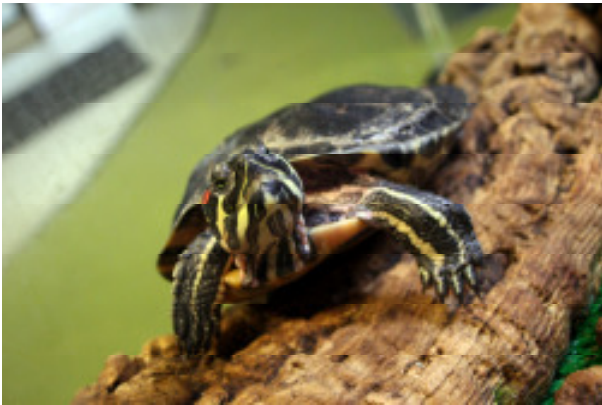
Barry Hughes
Swansea Museum
Victoria Road
Maritime Quarter
Swansea
SA1 1SN

For more information:

Telephone: 01792 653763 or 01792 447180

Email: Barry.hughes@swansea.gov.uk

Fax: 01792 652585



All workshops are free to 4site members. Non-members will be charged £35 per workshop plus class admission.

Tours/Workshops are restricted to one class of a maximum of 35 pupils at a time.

There is a schoolroom available for lunch with prior booking.

Schools are welcome to come and do their own thing: have a general walk about or do sketching or worksheets. Alternatively, schools may choose from the following available in English and Welsh: -

Guided Tours

10.30am - 11.15am

Tours are conducted by the staff who know the hothouse and its plants so well. Tours can be slanted towards particular themes and may be adapted for all age groups.

Animal Guided Tours

10.30am - 11.15am

Conducted by our resident animal technicians on the animals/insects that are housed here. These sessions will look at what they eat, how they are looked after and many other interesting facts.

Arts & Plants

10am – 12noon & 12.30pm - 2.30pm (1 ½ hrs for reception)

These practical art sessions, using the wonderful plants as inspiration, involve observational drawings focusing on shape, pattern and texture. They are half day sessions and can be linked with a gallery or museum visit.

Felt Making

10.30am - 12noon & 12.30pm - 2pm

Felting is a fairly simple process using wool without weaving or knitting. It lends itself superbly to coloured wall displays and felt panels can be abstract or pictorial.

Paper Making

10.30am - 11.15am

There will be a one week block of practical papermaking sessions where each child will make their own paper to take away with them.



Sounds of the Jungle

10.30am – 12noon & 1pm – 2.30pm (English only)

The children will be shown how to make and decorate their own rainsticks and shakers by the Crowman. He tells the story of his father's tool chest in which he keeps his collection of musical instruments and sound makers and explains the principles behind some of the first musical instruments and demonstrates how simple scrap instruments can be made with everyday materials.

Rainforest Workshops

10.30am - 11.15am (English only)

Based on our Education Officer's trip to the Amazon rainforest using her experience, slides and artefacts of Ecuador. The content will range from the plants, animals and people of this amazing region to the huge environmental issues that arise from its exploitation.

Suitable for Yr 2 onwards.

Easy Peasy Seed Germination

10.30am -12noon or 12.30pm - 2pm

What does a seed need to grow? The children will set up a scientific investigation to answer this question by planting pea seeds in Petri dishes in a variety of conditions. The children will measure the results, analyse the data and draw conclusions from the experiment. This session also looks at the needs of green plants which teachers can reinforce by taking the children into the hothouse.

Suitable for Yr 2 onwards.

Roots, shoots, flowers and leaves

10.30am – 12noon or 12.30pm - 2pm

Children will never forget the parts of the plants after discovering them inside the tropical hothouse. As well as focusing on the functions of the plant parts, the tutor will ask the children to identify how different species have adapted and consider the role of plants in their ecosystem. The workshop ends with a fun activity in which the children become roots and shoots themselves and work together to find food and water for their plant.

Suitable for KS1 & 2

Poetry at Plantasia

10.30am - 11.45am or 1pm - 2.15pm (English only)

To begin, the children and the tutor will read and discuss traditional poetry that has been written about plants and animals. The children will then go into the hothouse to be stimulated and inspired to write a formal rhyming couplet. There will be a short discussion about their couplets, in which the children will learn the importance of constructive feedback and drafting in the writing process. The rest of the workshop will focus on modern poetry, specifically "cut-up" style poems. The children will seek out the wide range of words (and definitions) that have been hidden in the hothouse and use them to construct abstract poems.

Suitable for KS2.

To book or make further enquiries phone **01792 474555** and ask for **Maria Bowen** or visit www.plantasia.org for further information.

Glynn Vivian Art Gallery



The Glynn Vivian Art Gallery is now closed for a major redevelopment project to help maintain the infrastructure of the original 1911 building and to improve public access for all.

Structural work will begin in 2012 and the redevelopment is expected to take two years to complete.

Further information is available on our website. www.swansea.gov.uk/glynnvivial

The Gallery's schools service, 4-site, is currently being modified so we can continue to run the essential education workshops within schools whilst offsite.

One of our team of experienced artist educators will visit the school with specially selected resources and materials for an exciting day of activities.

The artist educators are well-versed and practiced in the demands of Art and Design within the National Curriculum and each organised workshop is designed to give a balance of Understanding, Investigating and Making within the Foundation Phase and into Key Stage 2.

We are also able within a visit, to satisfy some of the demands of the Curriculum Cymreig through the increased understanding of the work of the artists of Wales.



For all Glynn Vivian 4-Site workshop enquiries, please telephone 01792 516900 or preferably send via email to Laura.Sims@swansea.gov.uk to register your interest.

Glynn Vivian Art Gallery, Alexandra Road, Swansea, SA1 5DZ

Tel: 01792 516900

Fax: 01792 516903

Email: Laura.Sims@swansea.gov.uk

www.glynnviviangallery.org

Dylan Thomas Centre



The Dylan Thomas Centre can offer workshops for two age groups.

8 – 11 year olds

A basic introduction to the life and work of Dylan Thomas, looking in particular at the poems and stories he wrote about his childhood. The session includes a guided tour of the Dylan Thomas Centre's Man and Myth exhibition, with a special quiz sheet to help youngsters explore the exhibit.

11 - 18 year olds

The Dylan Thomas Centre offers in-depth sessions on the life and work of Swansea's most famous son, which can be tailored to the needs of each group. Workshops on particular poems, stories or broadcasts can be given, by arrangement.

To book a workshop contact **Jo Furber** on **01792 463980** or email jo.furber@swansea.gov.uk

West Glamorgan Archives



The West Glamorgan Archive Service can help schools unlock the treasures stored in the archives and learn from this unique resource.

Booking and contact:

For an informal chat about the services we offer and to book a session please contact Katie Millien on 01792 637123 or email westglam.ararchives@swansea.gov.uk

How to find us:

We are located in the Civic Centre, Oystermouth Road, Swansea SA1 3SN

Our services

We offer two types of service. An archivist can either visit your school and provide a session using copy materials from the archives or groups can visit us at our Searchroom and use census returns and original documents such as photographs, maps school log books, trade directories and much, much more.

Searchroom sessions are available only on Mondays, when we are closed to the general public. Morning sessions start at 10.00 and afternoon sessions start at 13.00. Each session lasts between 1 ½ and 2 hours and begins with a general introduction to the Archive Service (What is an archive? What does an archivist do? Why is it important to look after documents? What are the enemies of records?)

The following are our fixed topics. If your school is studying any other topic then please contact us because we may be able to help.

Key Stage 2

Topic: Three Nights' Blitz and the Home Front

Groups will be introduced to a number of original documents created during the Three Nights' Blitz including photographs, school records, newspapers, diaries, oral histories, list of those who died and a Luftwaffe target map. We can also extend the topic to include the Home Front.

Topic: Victorians – Rich and Poor

A comparison between rich and poor Victorians focusing on Rees Court (a Swansea slum) and Margam Park (home of the Talbot family). Children use the following sources to draw comparisons between the lives of rich and poor Victorians: maps, plans, census, photographs of people and homes and newspapers.



Topic: Locality Study

Locality studies will be tailor made to suit your school. Each session will include all or some of the following documents: maps, census, photographs, trade directories, parish records, newspapers, oral histories, school records and many others.

Topic: SA1 Walking Trail

All primary schools in Swansea, Neath and Port Talbot will have received a "Walking the Swansea Waterfront" CD in June of this year. If you want to build on the resources contained in the CD or would like a chance to view the original documents used in the CD before taking your group out on the walking trail please get in touch.

Topic: Archives: Behind the scenes

A chance to visit the archives and see behind the scenes! Groups will be taken on a tour of the archive strongrooms, see the biggest, smallest, oldest and newest documents as well as finding out more about a day in the life of an archivist. Groups will also be given the opportunity for a hands on experience in helping to preserve documents.

Other topics covered: Swansea Markets; Mumbles Railway, Getting to Grips with the 1851 Census

West Glamorgan Archives Booking Form



Name of school:.....

Name of contact:.....

Telephone number:

E-mail:.....

Topic or theme:.....

.....

.....

Key Stage / Level:.....

No. in group.....

Type of service

Visit to Archive Searchroom

Visit to school

Preferred date and time:.....

-
- Every effort will be made to accommodate you on your chosen date and time.
 - At present we can only take school groups in our Archive Searchroom on Mondays.
 - Sessions usually start at 10.00am and 1.15pm and last approximately 1 ½ hours.
 - Visits to schools can take place Monday - Friday at a time to suit your school.
 - Resource packs contain around 20 images / copies of documents and cost £5.

For more information please contact Katie Millien on 01792 637123. Please return your completed forms to: westglam.archives@swansea.gov.uk or West Glamorgan Archive Service, Civic Centre, Oystermouth Road, Swansea, SA1 3SN

Central Library



Central Library is a new addition to the 4 Site family of venues this year and provides a great opportunity for Primary Schools to introduce its pupils to the basics of using library services for researching school projects.

Friendly staff will be on hand to guide and encourage the children to make use of the new Central Library facilities located at the Civic Centre.

Children will be shown:

- how to join,
- how to search the library catalogue to find relevant items,
- how to use specialist resources such as historical newspapers and maps and how to search the internet to make use of the wide variety of resources available.

Children will also be shown how to use free electronic subscriptions to library specific material such as the Encyclopaedia Britannica Online. Many of these resources can then be used freely at home once the child is a registered library customer.

*Each session will last two hours and can be tailored to an individual school project if requested.

Please note sessions are limited and are strictly by appointment only.

* Teachers who want a tailored session must inform the library of their requirements at least 3 weeks before a visit is planned giving details of the school project e.g. Celts / Romans, World War II, The 1960s / 70s etc.

If you have any queries or would like to book a workshop at Central Library please contact **Library Line** on **01792 636464** or email libraryline@swansea.gov.uk

Oystermouth Castle



From April 2012 this magnificent Norman Castle will once again be open for business to accept school visits after a few years of closure following vital conservation work.

We now offer an enhanced experience including a new visitor area, refurbished toilet facilities, an exhibition space and a new sheltered area to cater for school and community groups. We provide a package of curriculum opportunities to include foundation phase, key stage 2 and 3 elements.

Topics will include

- the Norman invasion,
- Norman Castles: form and function,
- Life in medieval Wales
- The Lords of Gower and the Welsh Princes,
- The Natural Environment – using the parkland and surrounding woodlands for orienteering sessions and investigation and enquiry into the natural environment.

As a 4site member, a visit to Oystermouth castle will include the following:

- A free pre-visit for Teachers to view the facilities, discuss and plan your visit that will be tailored to your requirements.
- access to printed resources/worksheets/education pack tailored to your particular key stage requirements for on site and follow up work
- a free personalised guided tour and workshop choice

School trips to the Castle will be welcomed on **Tuesdays** and **Thursdays** during term times and will usually consist of a half day session **10am – 12noon** or **1pm - 3pm** depending on your needs. We can currently accommodate up to a maximum of 30 pupils per session plus teachers and parent helpers.

Reservations should be made at least 10 working days prior to your visit to include a pre-visit. There are also opportunities to make this a full day experience by combining the visit with a trip to Swansea Museum in the morning followed by an afternoon at the Castle. There are many photographs, objects and artefacts to familiarise yourselves with in the exhibitions and stores at the Museum before putting these in to context at your afternoon at the castle.

For further details and to make a reservation for your school please contact:

Erika Kluge, Oystermouth Castle Community Officer
Tel: 07557 481467 or email Erika at Erika.kluge@swansea.gov.uk

Swansea Community Boat Trust



The Community Boat is available throughout the year for group bookings from 10 to 50 persons. We specialise in educational cruises on the River Tawe, starting from Swansea Marina travelling through the Locks, under the Sail Bridge and upstream to the Copper Quarter and return.

The Cruise is approximately 2 hours long and packed with historical information about Swansea's industrial past (the floating classroom). Also we cater for private and corporate functions for example Engagements, birthdays, weddings, etc. We can arrange Cold Buffets and light snacks.

<i>Name And Position</i>	<i>Organisation Type School / Society Etc</i>	<i>Address</i>	<i>Postcode</i>	<i>Tel No.</i>	<i>Email</i>

<i>Date Required</i>	<i>Number Persons</i>	<i>Event Type Historical Talk / Educational Training Or A Function</i>	<i>Catering Required And Special Requirements</i>

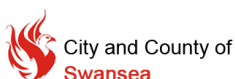
To cancel the river charter, 2 weeks notice must be given before the date of the trip. A 20% non refundable deposit is required as confirmation of the booking. If you have internet access look at the website www.scbt.org.uk, where a variety of information can be found.

The Boat Master or Boat Manager may postpone at any time due to inclement weather or unforeseen circumstances. Safety is always put first, Strictly no drugs are allowed on board. The Boat is a no smoking area. If the skipper decides that a passenger or passengers are not fit or intoxicated, they will be refused boarding permission and the charter may be cancelled in total. Please also do not bring any large items of luggage.

The evening prior to the trip after 6.00 pm, please contact the Boat Master Christine Joyce on 079717 441846 or myself on 01792 844141 or 07785 347549 for a weather update and sailing confirmation. If you wish to discuss an issue please ring at any time.

This letter is sent to all customers and is to help you have a safe and enjoyable day's cruise.

Best Regards
Wayne (Boat Manager)
Please return to:- Wayne Morgan
59 Kingrosia Park
Clydach
Swasnea
SA6 5PL



This project has been part-funded by the European Regional Development Fund through the Welsh Government.



Prices in brackets are for 4Site members

New Resource

Swansea and The Three Nights' Blitz (DVD) tells the story of the town following the devastating bombing raids of 1941. 55 minutes

Price: £8.95

Plantasia Arts & Plants Pack

A Teacher's Guide. 24 pages of ideas for art inspired by the collections at Plantasia.

Price: £9.95 (not including postage)

Mr Dillwyn's Diary

The diary of Lewis Weston Dillwyn from 1817 to 1852, full of comments on medicine, transport, crime, industry, etc. An edited version with notes & introduction for pupils. 136 pages, 115 pictures

Price: £7.95 (£7.15)

The Story of Swansea during the Second World War

A pack of drawn memories, paintings by Will Evans (4 in colour), memories, maps and photographs.

Price: £15 (£13.50)

Swansea and the War...60 years on

A collection of booklets with local memories, including extracts from the..."Diary of Laurie Latchford, 1940-41"

He was an air raid warden, and describes graphically the Swansea blitz, but is also very good on the nature of life at the time.

The memories of Elaine Kidwell, entitled..."From Air Raid Warden to Land Girl". At 17 she had claims to be the youngest warden in Britain. She describes the raids with great feeling, but then goes on to her time in the Land Army near Haverfordwest.

The last booklet, 16 pages, is..."The Memories of Mike Lewis-A Port Tennant boy at war". Mike was evacuated to Ystradgynlais, and describes his time there, and his home life, with great verve.

Also included is an information sheet on the wartime gun batteries at Mumbles and a copy of a contemporary painting of Swansea burning on 21st February, 1941, with the memories of the artist when he was in the Home Guard.

Price: £8

4-Site Publications



Eight Images of Coal Mining

Laminated copies of mining pictures from the collections at the Glynn Vivian with plenty of information and notes for teachers.

Price: £7.50 (£6.75)

John Dillwyn Llewellyn, pioneer photographer

A selection of the superb photographs from JDL's 1850s albums, early pictures of a Victorian family, and more.

Price: £7.95 (£7.15)

Ships & Industry

A pack of laminated copies of contemporary paintings, drawings, prints and photos, illustrating industrial and maritime growth from 1740 on....full notes on each picture.

Price: Reduced to £6

Toys

A pack containing 3 large colourful posters of our toy collection, an outline guide to the toys and notes on the history of toys.

Price: £9.95

Swansea Before Industry I ... the Town and its Surroundings

Castle, streets, hills, woodland, streams, etc. 68 pages, 62 pictures.

Price: £6.95 (£6.25)

Swansea Before Industry II ... Farming, Trading & Crafts

Corn, baking, wool, leather, markets & fairs, shops, building, etc. 103 pages, 78 pictures

Price: £7.95 (£7.15)

Swansea Castle by Bernard Morris

The standard account, full of useful medieval material. 108 pages, 74 pictures.

Price: £7.95 (£7.15)

4-Site Publications



The Work of the Cambrian and Glamorgan Potteries 1764 – 1870

A pack exploring the story of the Swansea potteries and the people who worked in them

Price: £2.50 (free to schools booking 'Potted History')

Videos

All filmed by Robin Hall.

Ships & Shanties

Shanties sung by Baggyrinkle against a background of maritime exhibits and the marina area. 20 minutes.

Price: £6.00

The White Rock Copper Works

Working out the mysteries of this marvellous industrial site by the Tawe. 25 minutes.

Price: £7.00

Investigating the ruins of Oystermouth Castle

Puts the castle in context, then thinks out its features on site. 53 minutes.

Price: £8.00

To Order

To purchase any of the above please tick the relevant publication(s) and send a cheque with your order. Alternatively we can invoice your school directly - just tick the relevant publications and write your name and school/college on the sheet.

Please note if paying by cheque please make them payable to City & County of Swansea, and send order to: Barry Hughes, Swansea Museum, Victoria Road, Swansea, SA1 1SN

School _____

Cheque enclosed

Value _____

Please invoice

Total _____

Factsheets



Factsheets vary from a single sheet to over 100 pages. They are simply printed, large with drawings illustrating the pages.

All are available on request. Please tick them on this sheet, add your name and the school/college and send to: Barry Hughes, Swansea Museum, Victoria Road, SA1 1SN. Make cheques payable to City & County of Swansea, or let us invoice you if the order is over £10.

School _____

Cheque enclosed Value _____

Please invoice Total _____

Title	Cost	Request
The mummy	75p	
Romans in Swansea & Gower	£1	
Romans in West Glamorgan	£1	
Vikings (in South Wales)	£1	
Medieval Swansea: charters	65p	
Normans in Gower	£1.95	
The Civil War in the Swansea area	£1	
Mills in the Swansea area	£1	
Lower Swansea Valley		
White Rock Ferry	20p	
Llansamlet coalowners and mining	50p	
Zinc	75p	
Early Copper Works	75p	
Later Copper Works	75p	
The Rise & Fall of the Copper Industry	75p	
Tinplate	£1	
The Grenfells of St. Thomas	£1	
The Morris family of Morryston	£1.20	
The Coppermen	75p	
Coal mining in Swansea area before 1700	£1.20	
Coal mining: the Eastside	£1.20	
Tramroads & Industrial Railways	£1.20	
Railways around Swansea	30p	
The Swansea Vale Railway	30p	
The South Wales Railway	30p	
The Mumbles Railway	30p	
Lifeboats (various)	10p & 20p	
Tugs (various)	10p & 20p	
Slums: public health in 19th century Swansea, Vols 1,2 & 3	£1.20 each	
Ynysmeudwy [Pontardawe] Pottery	10p	
Beam of Cornish Winding Engine	10p	
Lizzie the Elephant	30p	
Dylan Thomas	30p	

Resources



'Swansea and World War Two – The People's Story'

A NEW documentary capturing personal memories of one of the darkest times in Swansea's history is now available.

This is the latest instalment of Swansea Museum's popular World War Two documentaries and uses first hand accounts from eye witnesses to chart the city's struggle throughout the war and during the three-night Luftwaffe blitz of February 1941.

Price £8.95

Contact Us



Swansea Museum

Victoria Road
Swansea,
SA1 1SN
01792 653763

Glynn Vivian Art Gallery

Alexandra Road
Swansea,
SA1 5DZ
01792 516900

Plantasia

Parc Tawe
Swansea,
SA1 2AL
01792 474555

Dylan Thomas Centre

Somerset Place
Swansea,
SA1 1RR
01792 463980

Swansea Central Library

Civic Centre
Oystermouth Road
Swansea,
SA1 3SN
01792 636464

West Glamorgan Archives

Civic Centre
Oystermouth Road
Swansea,
SA1 3SN
01792 636589

School Registration 2011/12



Membership runs from 1 April 2011 to 31 March 2012
Membership cards will be issued once payment is received.

To get involved with all the exciting educational activities included in 4Site, schools will be asked for a registration fee for 2011-12 (prices listed below). This will make a school eligible for free INSET training as well as access to all 4Site activities.

I enclose a cheque payable to City & County of Swansea - £130

Our school has 50 pupils or less - £65

I have decided to pay on a class/visit basis of £35 a time

Our school is located in:

City and County of Swansea

Neath Port Talbot

Other Local Authority area

School _____

Address _____

Postcode _____

Telephone _____

Contact _____ Date _____

If you want to discuss this please ring **01792 653763** and ask to speak to **Barry Hughes**.

Please return the form directly to:

Swansea Museum
Victoria Road
Swansea
SA1 1SN